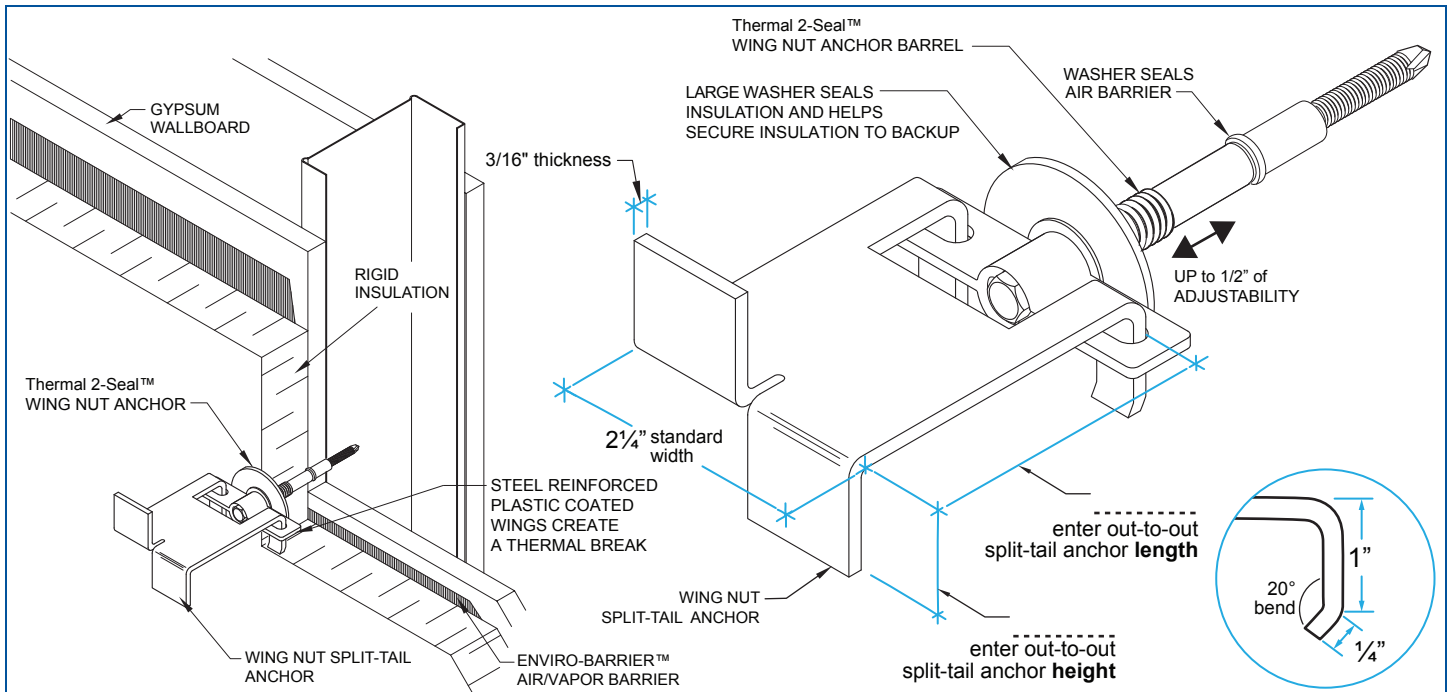


Veneer Anchors

Thermal 2-Seal™ Wing Nut Stone Anchor (Split-Tail)



DRAWINGS FOR ILLUSTRATIVE PURPOSES ONLY

H&B RECOMMENDS 16" X 16" SPACING

Thermal 2-Seal™ Wing Nut Tie STONE ANCHOR

An innovative single screw veneer tie for metal stud construction. Featuring a dual-diameter barrel with factory-installed EPDM washers to seal both the face of the insulation and the air/vapor barrier.

- The projecting Thermal Wings: Are made from steel reinforced plastic to create a thermal break, decreasing thermal transfer through rigid insulation (plastic is highly flame resistant). Accepts standard or seismic hooks. Spins to easily orient pintles/hooks parallel to masonry joints. Up to 1/2" of adjustability to account for variations in wall thicknesses.
 - Made with a 5/16" hex head, install with a standard hex socket
- Extra large washer helps secure insulation to backup.**

Screw (Carbon Steel): ASTM A510 (Carbon Steel) ASTM C954 (1000-hour polymer coating)

Sheet Metal (Stainless Steel): ASTM A666, ASTM A480/480M, and ASTM A240/A240M - AISI Type 304 or 316

Thermal 2-Seal™ Wing Nut Anchor: U.S. Pat. No. 7,415,803
Stone Split-Tail Thermal 2-Seal™ Wing Nut: U.S. Pat. No. 9,334,646

Due to fabrication requirements and lead times, once a custom anchor order has been scheduled it cannot be cancelled and will not be returnable. Verify all measurements before signing this form. Any changes after the initial order is placed will require a new signed form, and an additional charge. By signing below, you agree to the terms stated above and accept full responsibility for the accuracy of measurements.

Orders without a signature will not be processed.

ACCEPTED BY: _____

DATE: _____

Enter Wing Nut Split-Tail Anchor Height and Length in the Illustration Above.

Thermal 2-Seal™ Wing Nut Anchor Barrel Finish:

- Stainless Steel - Type 304

Thermal 2-Seal™ Wing Nut Anchor Style:

(Equal to thickness of wallboard + insulation)

- | | |
|---|---|
| <input type="checkbox"/> Wing Nut 2-Seal Tie (5/8") | <input type="checkbox"/> Wing Nut 2-Seal Tie (4") |
| <input type="checkbox"/> Wing Nut 2-Seal Tie (1") | <input type="checkbox"/> Wing Nut 2-Seal Tie (4 1/2") |
| <input type="checkbox"/> Wing Nut 2-Seal Tie (1 1/2") | <input type="checkbox"/> Wing Nut 2-Seal Tie (5") |
| <input type="checkbox"/> Wing Nut 2-Seal Tie (2") | <input type="checkbox"/> Wing Nut 2-Seal Tie (5 1/2") |
| <input type="checkbox"/> Wing Nut 2-Seal Tie (2 1/2") | <input type="checkbox"/> Wing Nut 2-Seal Tie (6") |
| <input type="checkbox"/> Wing Nut 2-Seal Tie (3") | <input type="checkbox"/> Wing Nut 2-Seal Tie (6 1/2") |
| <input type="checkbox"/> Wing Nut 2-Seal Tie (3 1/2") | <input type="checkbox"/> CUSTOM STYLE _____ |

Wing Nut Split-Tail Anchor Finish:

- Stainless Steel - Type 304
 Stainless Steel - Type 316

Wing Nut Split-Tail Anchor Thickness (STANDARD WIDTH: 2 1/4"):

- 3/16"

NOTE: H&B recommends Stainless Steel for maximum protection against corrosion.

IMPORTANT: Since each construction project is unique, the appropriate selection and use of any product contained herein must be determined by competent architects, engineers and other appropriate professionals who are familiar with the specific requirements of the project in question. This drawing and/or data sheet is the confidential and proprietary information of Hohmann & Barnard, Inc. and is not to be reproduced, copied or disclosed, in whole or in part, without the prior written consent of H&B.