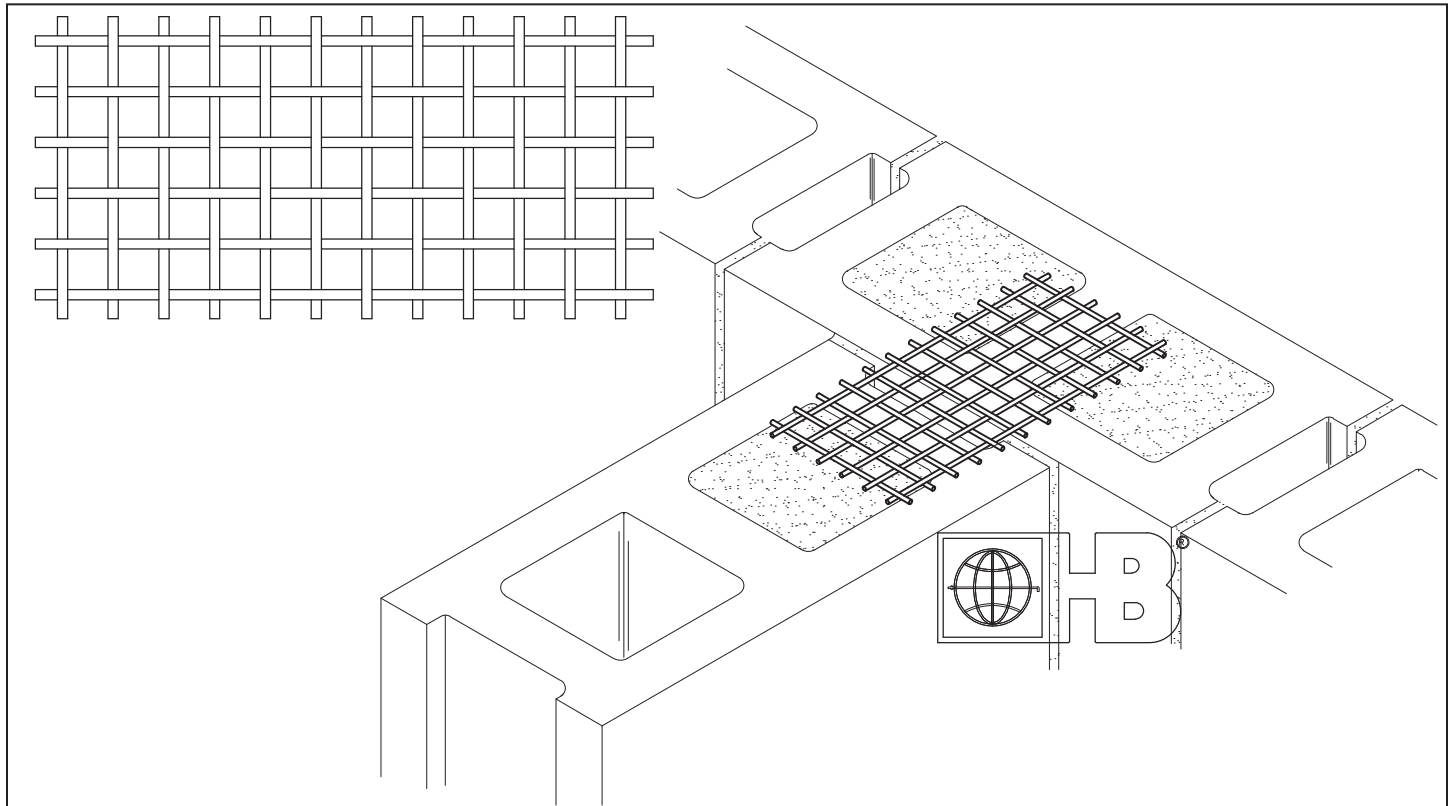


HOHMANN & BARNARD, INC.
a MiTek company

Ties & Anchors - Miscellaneous

MWT - Mesh Wall Tie



DRAWINGS FOR ILLUSTRATIVE PURPOSES ONLY

MWT - Mesh Wall Tie:

- For bonding intersecting masonry walls
- Conforms to ASTM A185

Dimensions:

- 1/2" square x 16 gauge
- Available in 100' rolls standard, width to suit
- Cut to any width or length required

Material Conformance

- Cold-drawn steel wire (ASTM A1064/A1064M)
- Hardware Cloth (ASTM A740):
- Hot-Dip galvanized (ASTM A153/A153M-B2 Class B)
- Stainless Steel (ASTM E2016, Type 304)

Note: Hohmann & Barnard recommends Stainless Steel for maximum protection against corrosion.

FINISHES:

- Hot-Dip galvanized
- Stainless Steel

LENGTH (100' rolls standard, specify piece length below):

- 8"
- 12"
- 100' roll (standard)
- Other _____

WIDTH (for roll or piece):

- 3" wide for 4" wall
- 4" wide for 6" wall
- 6" wide for 8" wall
- 8" wide for 10" wall
- 10" wide for 12" wall
- Other _____

GAUGES:

- 1/2" square x 16 ga. (Standard)

IMPORTANT: Since each construction project is unique, the appropriate selection and use of any product contained herein must be determined by competent architects, engineers and other appropriate professionals who are familiar with the specific requirements of the project in question. This drawing and/or data sheet is the confidential and proprietary information of Hohmann & Barnard, Inc. and is not to be reproduced, copied or disclosed, in whole or in part, without the prior written consent of H&B.

HOHMANN & BARNARD, Inc.

30 Rasons Court | Hauppauge, NY 11788
CORPORATE HEADQUARTERS

T: 800.645.0616 F: 631.234.0683

www.h-b.com

Branch/Subsidiary Locations:

ALABAMA - ARIZONA - ILLINOIS

MARYLAND - NEW YORK

PENNSYLVANIA - TEXAS - UTAH

CANADA

© 2013-2019 MiTek®