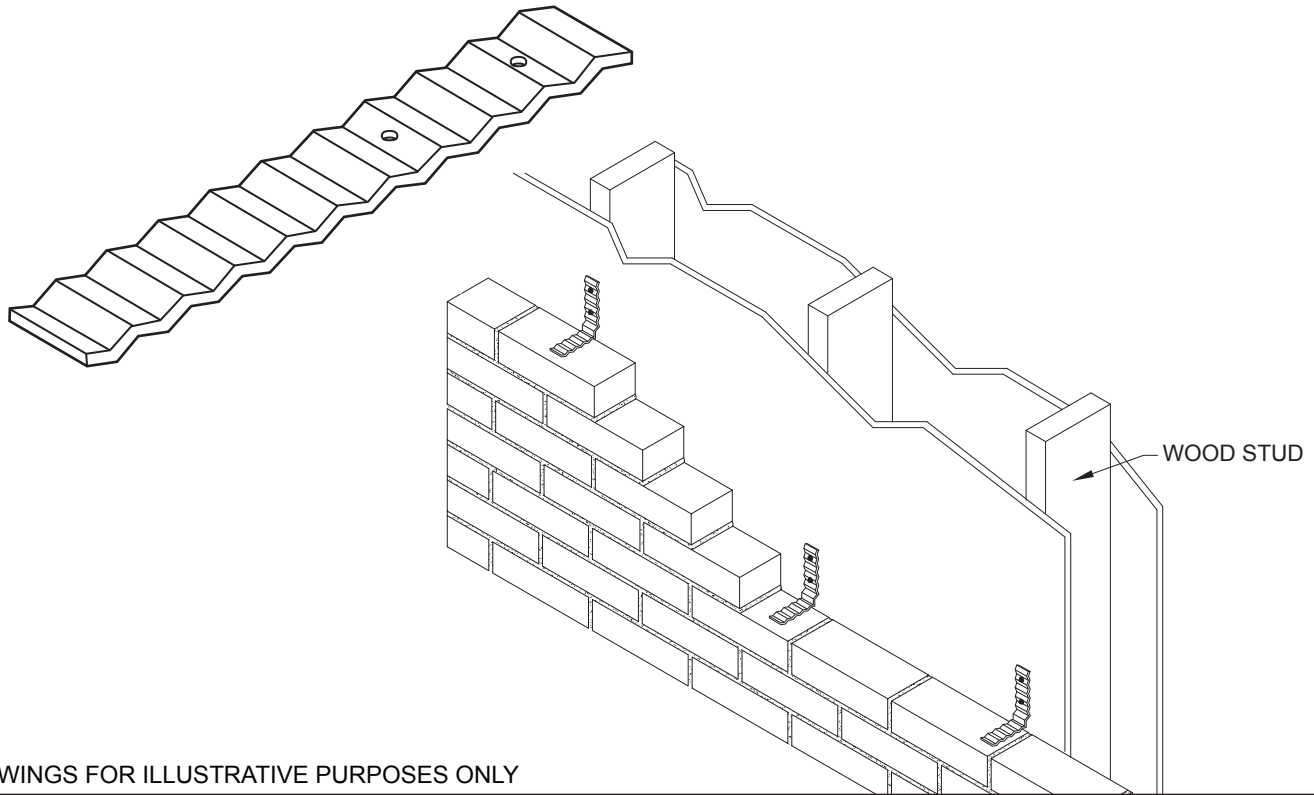


# Ties & Anchors - Miscellaneous

## CWT - Corrugated Wall Tie



DRAWINGS FOR ILLUSTRATIVE PURPOSES ONLY

**CWT - Corrugated Wall Tie for anchoring Wood Stud construction to Masonry, recommended only for residential construction.**

**Sheet Metal (Carbon Steel):**  
**ASTM A1008/A1008M**

Zinc Coating:

Mill Galvanized: **ASTM A641/A641M** (0.1 oz/ft<sup>2</sup>)

Hot-Dip Galvanized after fabrication (sheet metal ties and anchors):

**ASTM A153/A153M-B2 Class B**

Note: Hohmann & Barnard will certify to a minimum of 2.0 oz/ft<sup>2</sup>

**Sheet Metal (Stainless Steel):**

**ASTM A666, ASTM A480/480M, and ASTM A240/A240M AISI Type 304 or Type 316**

**Dimensions:**

7/8" wide x 22 ga., 18 ga., or 16 ga. x 7" long

Other widths, lengths and gauges available upon request.

**Finishes:**

Mill Galvanized

Hot-Dip Galv. | Stainless Steel:  Type 304  Type 316

**Note: Hohmann & Barnard recommends Stainless Steel for maximum protection against corrosion.**

**Thickness:**

22 gauge

18 gauge

16 gauge

Other \_\_\_\_\_

**Width:**

7/8" (standard)

Other \_\_\_\_\_

**Length:**

7" (standard)

Other \_\_\_\_\_

**IMPORTANT:** Since each construction project is unique, the appropriate selection and use of any product contained herein must be determined by competent architects, engineers and other appropriate professionals who are familiar with the specific requirements of the project in question. This drawing and/or data sheet is the confidential and proprietary information of Hohmann & Barnard, Inc. and is not to be reproduced, copied or disclosed, in whole or in part, without the prior written consent of H&B.