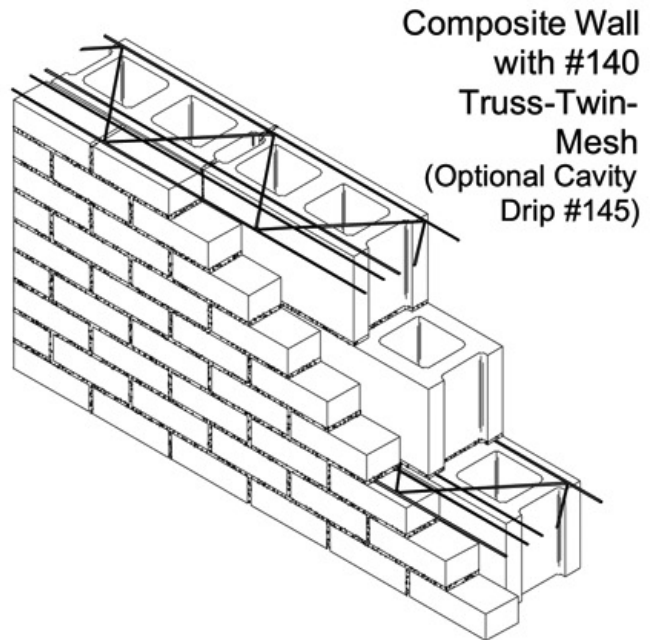
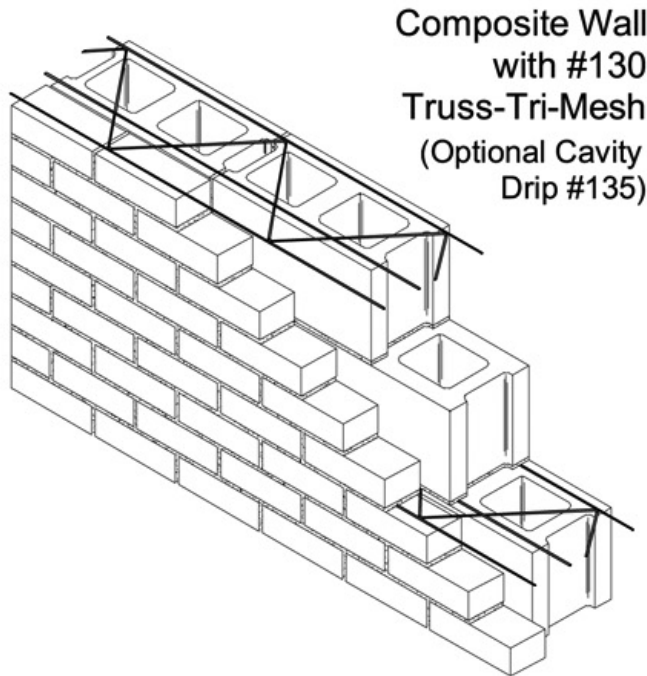


## #130 / #135 / #140 / #145 Truss-Mesh



DRAWINGS FOR ILLUSTRATIVE PURPOSES ONLY

### MATERIAL CONFORMANCES - JOINT REINFORCEMENT

Hohmann & Barnard joint reinforcement products conform to Standard Specification ASTM A 951 & ACI / ASCE 530 (Building Code Requirements for Masonry Structures)

**WIRE:** (Carbon Steel): Prefabricated construction from cold-drawn steel wire conforming to ASTM A 82:  
Tensile strength - 80,000 p.s.i.,  
Yield Point - 70,000 p.s.i. minimum

### WIRE DIAMETER:

9 gauge (.148" or W1.7)  
3/16" (.187" or W2.8)  
Side Rods and Cross Rods available in any combination of the above. Cross Rods welded 16" O.C.

### FINISHES:

- Mill galvanized coating: ASTM A 641 (0.1 oz/ft<sup>2</sup>).  
Also available on special order: ASTM A 641 Class 1 (0.4 oz/ft<sup>2</sup>).  
ASTM A 641 Class 3 (0.8 oz/ft<sup>2</sup>).
- Hot-dip galvanized after fabrication: ASTM A 153 (1.5 oz/ft<sup>2</sup>).
- Stainless Steel: ASTM A 580 - AISI Type 304 (Type 316 available on special order).  
Note: H&B recommends Stainless Steel for maximum protection against corrosion.

### WIRE SIZE:

- (S) Standard Weight:  
9 Gauge Side Rods x 9 Gauge Cross Rods
- (EH) Extra Heavy:  
3/16" Side Rods x 9 Gauge Cross Rods
- (SHD) Super Heavy Duty  
3/16" Side Rods x 3/16" Cross Rods
- #130 Truss-Tri-Mesh
- #135 Truss-Tri-Mesh (+Drip)
- #140 Truss-Tri-Mesh
- #145 Truss-Tri-Mesh (+Drip)
- State overall wall size when ordering.



Hohmann & Barnard, Inc.  
30 Rasons Court  
Hauppauge, New York 11788  
TEL: (800) 645-0616 FAX: (631) 234-0683

WEBSITE: [www.h-b.com](http://www.h-b.com)  
E-MAIL: [weanchor@h-b.com](mailto:weanchor@h-b.com)

©HOHMANN & BARNARD, INC. - 1999