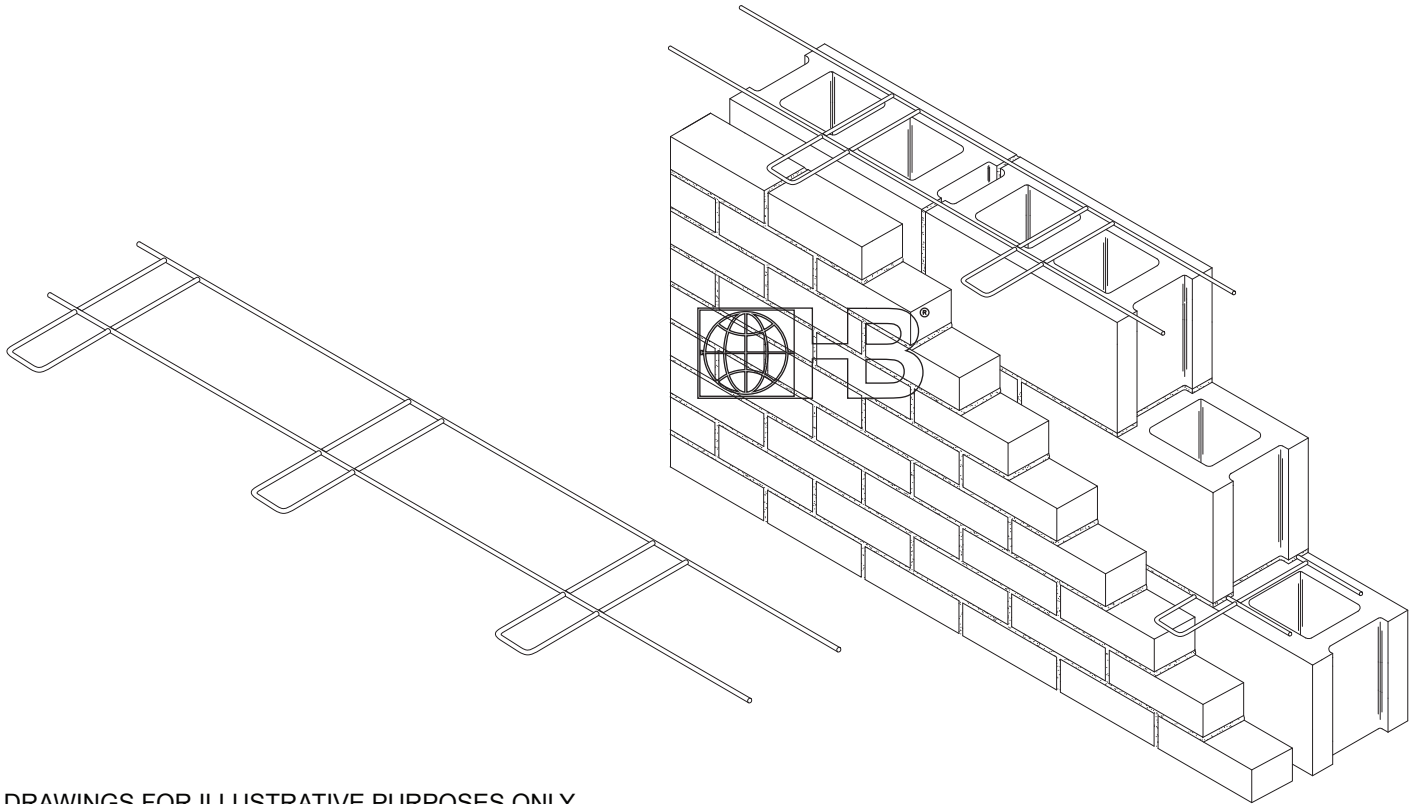




**HOHMANN & BARNARD, INC.**  
a MiTek company

# Lox♦All® Ladder Joint Reinforcement

## 250 Ladder-Box-Mesh



DRAWINGS FOR ILLUSTRATIVE PURPOSES ONLY

### 250 Ladder-Box-Mesh Composite Wall

Welded boxes project from backup Ladder-Mesh Reinforcement and tie into brick face.

#### MATERIAL CONFORMANCE

Hohmann & Barnard joint reinforcement products conform to:

**ASTM A951/A951M** (Standard Specification for Steel Wire for Masonry Joint Reinforcement)

**ACI / ASCE 530** (Building Code Requirements for Masonry Structures)

**Wire** (Carbon Steel): Prefabricated from cold-drawn steel wire conforming to **ASTM A1064/A1064M**

Tensile Strength - 80,000 p.s.i. | Yield Point - 70,000 p.s.i. minimum  
Zinc Coating:

Mill Galvanized coating: **ASTM A641/A641M** (0.1 oz/ft<sup>2</sup>)

Available special order: **ASTM A641/A641M** (0.4 oz/ft<sup>2</sup>)

**ASTM A641/A641M** (0.8 oz/ft<sup>2</sup>)

Hot-Dip Galvanized after fabrication: **ASTM A153/A153M-B2** (1.5 oz/ft<sup>2</sup>)

Note: Hohmann & Barnard will certify to a minimum of 2.0 oz/ft<sup>2</sup>

**Wire** (Stainless Steel): **ASTM A580/ASTM 580M** - AISI Type 304  
(Type 316 available on special order)

#### Wire Diameter:

9 gauge (.148" or W1.7) or 3/16"Ø (.187" or W2.8)

Side Rods and Box Ties available in any combination of the above.

Box Ties lap-welded 16" O.C.

**H&B manufactures steel wire products from a minimum of 95% recycled material.**

#### Finishes:

- Mill Galvanized Coating
- Hot-Dip Galvanized
- Stainless Steel - Type 304
- Stainless Steel - Type 316

**Note: H&B recommends Stainless Steel for maximum protection against corrosion.**

#### Wire Size (10' length standard, custom length available special order):

- (S) Standard Weight: 9 Gauge Side Rods x 9 Gauge Boxes
- (EH) Extra Heavy: 3/16" Side Rods x 9 Gauge Boxes
- (SHD) Super Heavy Duty: 3/16" Side Rods x 3/16" Boxes

#### Block Size:

- |                              |                              |                              |                              |
|------------------------------|------------------------------|------------------------------|------------------------------|
| <input type="checkbox"/> 4"  | <input type="checkbox"/> 6"  | <input type="checkbox"/> 8"  | <input type="checkbox"/> 10" |
| <input type="checkbox"/> 12" | <input type="checkbox"/> 14" | <input type="checkbox"/> 16" |                              |

Note: For Corner or Tee, state width of block walls.

**IMPORTANT:** Since each construction project is unique, the appropriate selection and use of any product contained herein must be determined by competent architects, engineers and other appropriate professionals who are familiar with the specific requirements of the project in question.

**HOHMANN & BARNARD, Inc.**  
30 Rasons Court | Hauppauge, NY 11788  
CORPORATE HEADQUARTERS  
T: 800.645.0616 F: 631.234.0683  
[www.h-b.com](http://www.h-b.com)

**Branch/Subsidiary Locations:**  
ALABAMA - ILLINOIS - MARYLAND  
NEW YORK - PENNSYLVANIA - TEXAS  
UTAH - CANADA

© HOHMANN & BARNARD, INC. - 2015